

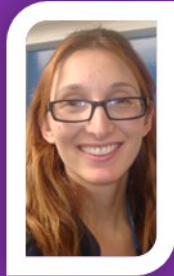
Senior Leadership Team



Chris Walton
Principal



Amanda Smith
Vice Principal
Phase 3 Leader
English Leader



Sarah Webb
Asst Principal
Phase 1 Leader
SMSC Leader



Alison Green
Asst Principal
Phase 2 Leader
Assessment & Pupil
Premium Leader

PASTORAL TEAM

Jane Brailsford – Senior Learning Mentor
Zarda Fazil – Senior Learning Mentor
Michelle Eddison – Behaviour Support Worker
Eugenia Kamožinova – Eastern European Support Worker
Stella Hoar – Attendance Officer

Uniform available to purchase from the Academy
Main Office & direct from Logo Leisurewear

Pricing:

Polo shirt: £6.50
Sweatshirt: £7.00
Jumper: £10.95
Cardigans: £9.00
Fleece: £11.50
**Hooded Sweat
Top: £11.00**
Coat: £19.00
Neckerchief (Infant): £5.20
Neckerchief (Junior): £5.60
Ties: £3.50

Uniform Shop

Uniform can be purchased
or ordered at the following
times:

Tuesday Afternoons:
2:30pm – 3:30pm
Wednesday Afternoons:
2:30pm – 3:30pm
Thursday Mornings:
8:30am – 9:30am



Parents' Guide to Pathways

Academy Office

The Academy Office is open between 8.30am and 3.45pm each day. During this time our staff will be more than happy to help with any enquiries.

Academy Day

Nursery:	5X Morning:	8:30am-11:30am OR
	5X Afternoon:	12:15pm-3:15pm OR
	Mon/Tue	9:15am - 3:15pm
	Wed	8:30am - 11:30am OR
	Wed	12:15pm - 3:15pm
Thurs/Fri	9:15am - 3:15 pm	
Foundation:	Morning:	8:55am - 11:40am
	Afternoon:	12:50pm - 3:15pm
Key Stage 1:	Morning:	8:55 am - 12:00pm
	Afternoon:	1:00pm - 3:15pm
Key Stage 2:	Morning:	8:55 am - 12:15pm
	Afternoon:	1:10pm - 3:15pm

Academy Office Staff

Mrs Crossland
Academy Manager

Mrs Wattam
Senior Clerical Officer

Mr Gawler
PA / PR / Data Manager

Mrs Davies
Finance Officer

Vacancy
Clerical Officer / Reception

Administration of Medicine

Unless your child has a Care Plan, medicines are only administered if they are prescribed and are needed 4 times a day.

Dinners & Academy Trips

ALL payments for Academy Dinners and Trips are to be made directly in the boxes placed in Reception and the Dining Room. There are envelopes available in every classroom or on the Reception desk.

The Main Office will be unable to take payments.

Dinners are priced at £2.00 per day / £10.00 per week.

Attendance

If your child is going to be absent can you please ensure that you inform the Academy by 10:00am that morning.

If your child will be arriving late to the Academy can you please ensure that their dinner is ordered at the Academy office by 10:00am.

Can you please ensure that ALL dental & doctors' appointments are made outside of Academy hours. If your child has a Hospital /Dental appointment can you please provided the Academy Main Office with their appointment letter.

Term Time, Holidays & INSET Days

Autumn Half Term 1

Thursday 1st September to Friday 21st October

Half Term: Monday 24th October to Friday 28th October

Spring Half Term 1

Tuesday 3rd January to Friday 17th February

Half Term: Monday 20th February to Friday 24th February

Summer Half Term 1

Monday 24th April to Friday 26th May

May Day Holiday: Monday 1st May

Half Term: Monday 29th May to Friday 2nd June

Autumn Half Term 2

Monday 31st October to Friday 16th December

Xmas Holiday: Monday 19th December to Monday 2nd January

Spring Half Term 2

Monday 27th February to Friday 7th April

Easter Holiday: Monday 10th April to Friday 21st April

Summer Half Term 2

Monday 5th June to Friday 21st July

INSET Days (school closed)

Thursday 1st September / Friday 2nd September

Monday 17th October / Tuesday 3rd January

Monday 22nd May

REQUESTS FOR PUPIL LEAVE OF ABSENCE

PLEASE NOTE: No holidays during term time will be authorised by the Academy.

Up to 10 days leave of absence can be authorised in exceptional circumstances. Family holidays are highly unlikely to be viewed as exceptional circumstances.

Pupil Leave Of Absence

Since September 2015, if you take your child on holiday in term time, you will be issued with a fixed penalty notice (fine) by the local authority.

If a penalty noticed is issued, each parent must pay £60 within 21 days or £120 within 28 days. Failure to pay within 28 days will result in a court summons on the grounds that you have failed to secure your child's regular school attendance.

Whilst we understand the pressures many families face it is important to note that the government has introduced this new legislation to ensure good attendance for all. Its gives a clear message that it is important that every child attends school for as many days of the year as possible. It is the responsibility of the parents to ensure that their child does not take unnecessary time off school.